

# NetScanTools® Pro



## Monthly Newsletter

www.netscantools.com

April 2016

 <http://twitter.com/netscantools>

 <http://www.facebook.com/NetScanTools>

 <http://www.youtube.com/user/netscantools>

 <http://netscantools.blogspot.com/>

### In this newsletter:

#### News

- **NetScanTools Basic 2.5 released April 22, 2016**
- **Managed Switch Port Mapping Tool 2.66 released April 14, 2016**
- **NetScanTools Pro 11.74 released April 4, 2016**
- **New NetScanTools Pro version coming first week of May**
- **SSL Certificate Scanner Standalone Version**
- **When you order software online - FastSpring**
- **Code Signing – SHA1 and SHA256**
- **NetScanTools Products and Windows 10**

## News...

### From the Editor...

It's a busy time of the year – several new releases – check out the Standalone SSL Cert Scanner below.

-Kirk

### NetScanTools Basic 2.5 Released April 22, 2016

**This release fixes Printing on Ping, Ping Scanner and Traceroute.** It is also code signed with both SHA256 and SHA1 for maximum portability across operating systems.

Release notes:

- Fixed printing from Ping, Traceroute and Ping Scanner.
- Fixed paste, copy, cut, etc. in the input field boxes. Actions like ctrl-v for paste now work.

- Changed Switch Port Mapper icon in 'Other Programs with More Tools' to new icon.
- Updated SQLite to version 3.12.0
- Code signing now uses both SHA256 and SHA1 for maximum operating system portability.

## **Managed Switch Port Mapping Tool v2.66 Released April 14, 2016**

**This release has rewrite of the LAG/Trunk reporting algorithm.** The first release that dealt with LAG/Trunking was 2.63 and it needed significant adjustment, All releases 2.64 through 2.66 have fixed issues relating to adding LAG reporting.

**Download version 2.66 from here and install it over the top of your current installed version. USB version users need to use the Help Menu/Check for Update selection to obtain the upgrade patch:**

<http://www.switchportmapper.com/>

### **2.66 April 14, 2016 release notes:**

- Fixed SNMPv1 mode hang.

### **2.65 April 13, 2016 release notes:**

- Revised LAG port algorithm.
- Fixed LAG section of web page reports so that it shows only one row per LAG port.
- Updated MAC address/Manufacturer database.
- Code signing now uses both SHA256 and SHA1 for maximum operating system portability.

### **2.64 March 30, 2016 release notes:**

- Corrected problem in Switch List Final Report that gave SQLite database error message.
- Updated SQLite to version 3.12.0
- Updated MAC address/Manufacturer database.
- Code signing now uses both SHA256 and SHA1 for maximum operating system portability.

## **NetScanTools Pro 11.74 released April 4, 2016**

**This version has several improvements in the SSL Certificate Scanner and other fixes.**

NetScanTools Pro 11.74 has a number of changes to the SSL Certificate Scanner to make it match the release level of the 'standalone' version of the SSL Certificate Scanner. We also added a registry key check that you can use to disable showing a 'WinPcap not running' message on delayed load machines.

Other minor fixes were added and all databases were updated.

Please update soon. You will need an active maintenance plan to do so. Click on Help/Check for New Version for the download links to the full installer. USB users are downloading an upgrade patch.

*Speaking of the full installer – save it in a safe place and replace any old versions. We constantly run across users who have reinstalled or moved their software to a new computer and they do so by using an old installer. Sometimes the installer is many, many versions older - so **SAVE** the latest one and discard the old ones!*

#### **11.74 release notes**

- -SSL Certificate Scanner: updated to match standalone version changes.
- -Mac Address to Manufacturer: mac addresses with periods now accepted. For example 11.22.33.44.55.66 or 1122.3344.5566
- -Added method for hiding initial WinPcap not active warning. In the registry, add HideNotRunningWarning as a DWORD with a value of 1 in this path: HKEY\_CURRENT\_USER\Software\NWPS\NetScanTools Pro 11\WinPcap
- -Updated SQLite to version 3.12.0
- -Updated MAC address/Manufacturer database.
- -Updated IP to Country database.
- -Code signing now uses both SHA256 and SHA1 for maximum operating system portability.

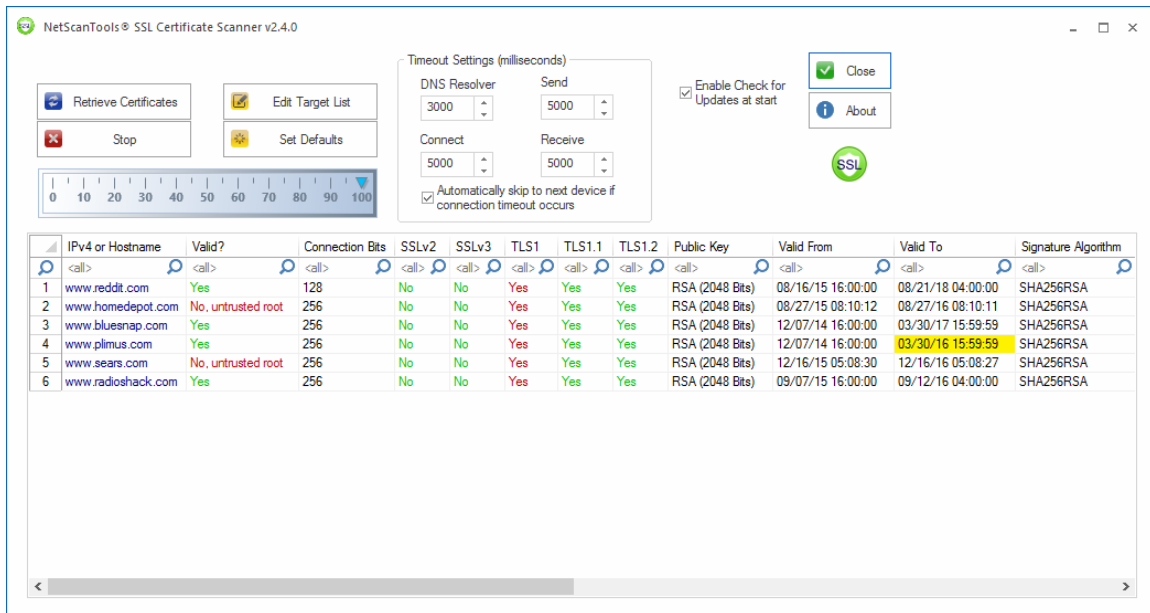
### **New NetScanTools Pro Version Coming First Week of May**

**A new minor revision of NetScanTools Pro is almost complete and should be done in the first week of May.** This version has several improvements to the Packet Flooder. If you are not on the notification list, please use Help/Check for New Version to see if it has been released.

### **SSL Certificate Scanner Standalone Version**

We've had many requests for a standalone version of the SSL Certificate Scanner that is part of NetScanTools Pro (and will continue to be part of it). A standalone version will be a reality soon – within the next week. Watch the NetScanTools.com main page, our facebook page or twitter for the announcement.

A screenshot is on the next page



## When you order our software online - FastSpring

**Let's clear up some confusion about ordering online from our websites.** We have partnered with an online order reseller name FastSpring. When you click on an orange Buy Now button or use the purple Add to Cart button, you are using FastSpring. If you complete an order through them, the order number will start with "NOR16xxxx" and the charge on your credit card will have their name in it.

**What about the invoice? When you order online through FastSpring, you are not ordering from us, you are ordering through a reseller.** This means the invoice you receive will come from FastSpring. *Where is the invoice?* It is linked in the very first email you receive from FastSpring acknowledging the order.

**What about Paypal?** FastSpring accepts Paypal and so do we. We accept it for NetScanTools Pro Maintenance Plan renewals and if you request us to generate and email a Paypal Invoice. If you use Paypal with FastSpring, then FastSpring is the seller and they will generate the invoice. If you use Paypal with Northwest Performance Software, then we are the seller and the invoice will come from us.

## Code Signing – SHA1 and SHA256

**Managed Switch Port Mapper v2.61 was the first release to support double code signing.** What are we talking about? The older SHA1 signing algorithm is weak, so effective Jan 1, 2016, Microsoft began (or maybe put off again) enforcing the requirement that installations be code signed with SHA256. V2.61 is signed with both SHA1 to support older operating systems and SHA256 for Windows 10. The installer and the executables are both signed this way. NetScanTools Pro will also be signed that way on the next release. To see what we are talking about, right click on spmap262.exe and select Properties, then look that the Digital Signatures tab. We

also added double signing to the NetScanTools Pro demo and will be adding it to all products soon.

## NetScanTools Products and Windows 10

All of our products have been tested on Windows 10 in it's various iterations. I have yet tested on the official versions, 32 and 64 bit and all seems OK. The biggest problems were with the WinPcap packet driver. That appears to have stabilized and work is being done to bring WinPcap out of the Windows XP world of NDIS5 to NDIS6. The nmap folks have a beta which seems to work well. Another that works is Win10Pcap – I only tested the first '5001' build and have not checked any subsequent builds. In either case, since these are GNU open source licensed, we will not be including them with our installer rather we will direct you to their download pages. WinPcap is required for NetScanTools Pro and optional for NetScanTools LE.

NetScanTools Pro, NetScanTools LE, NetScanTools Basic, ipPulse and the Managed Switch Port Mapping Tool have all be recently compiled for and tested on Windows 10 technical previews.

## Contact Information

If you have any questions or suggestions, please feel free to email.

Northwest Performance Software, Inc.  
PO Box 1375  
Sequim WA 98382  
(360) 683-9888  
[www.netscantools.com](http://www.netscantools.com)  
sales [at] netscantools [dot] com

'NetScanTools Pro', 'NetScanTools Standard', 'NetScanTools Basic', 'NetScanTools LE', 'ipPulse', 'Northwest Performance Software' and 'NetScanTools.com', are trademarks of Northwest Performance Software, Inc. 'NetScanTools' is a registered trademark of Northwest Performance Software, Inc.