



September 2010 Newsletter

Note from Kirk: Where did September go? I wish I could say I was finished, but I'm still working on NetScanTools Pro version 11. I've been so busy with it and the Switch Port Mapper that I haven't had time to do this newsletter.



<http://twitter.com/netscantools>

Blog:

<http://netscantools.blogspot.com>



<http://www.facebook.com/#!/pages/NetScanTools/117859474900452>

In this newsletter:

News

- Managed Switch Port Mapping Tool 1.99.1 released September 15, 2010
- NetScanTools® LE 1.30 Released Sept 1, 2010
- NetScanTools® Pro version 11 Development Status and NEW Screenshots
- NetScanTools® Pro 10.98?
- Two workarounds for NetScanTools Pro 10.97 and earlier
- NetScanTools® Pro 10.97 Released June 28, 2010
- NetScanTools® Pro 2 year Term Maintenance Plans

Reminders

- NetScanTools® Pro Versions Compatible with Windows 7 and Windows Vista
- NetScanTools® Pro on Windows 7 - 64 bit
- ipPulse 1.70 Released May 20, 2010
- How to Upgrade NetScanTools® Pro
- USB Version Users – Backup Your Software!
- About the Maintenance Plan – NetScanTools® Pro
- Contact Information

NEWS...

Managed Switch Port Mapping Tool 1.99.1 released Sept 15, 2010

Changes in the program:

- Fixed problem where if VLAN column was not visible, qBridge-MIB information was not processed.
- Added more Support Mode informational messages.
- Speed improvements by doing less database queries and removing a duplicate SNMP query.

- Added additional validation of MAC address data.
- Added automatic version check. This is controllable in Setup.
- Changed 'About' window.
- Updated SQLite to version 3.7.2.
- Updated MAC address/Manufacturer database.

Get it at <http://www.switchportmapper.com/> or <http://www.netscantools.com/spmapmain.html>

NetScanTools® LE 1.30 Released Sept 1, 2010

NetScanTools LE (Law Enforcement version) 1.30 was released on Sept 1, 2010.

Here are the changes in this release:

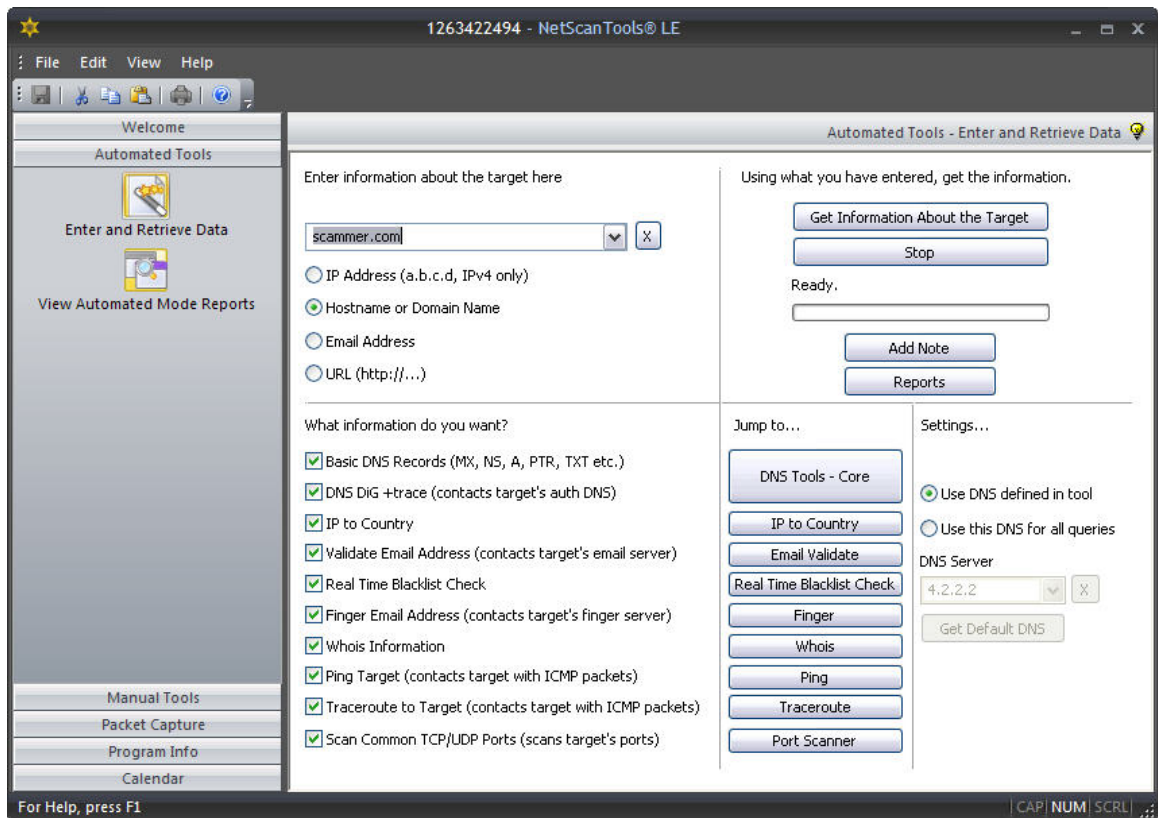
- Added proper handling of truncated UDP DNS responses so that long (over 512 byte) DNS records are correctly retrieved.
- Corrected problem in Automated Tools: If IP to Country was checked and something other than an IP address was entered, it might shutdown because the input was not an IP address.
- Fixed text of error message about not being able to load ICMP in Traceroute and Ping.
- Optimized window resizing code.
- Reports button on 'Automated Tools - Enter and Retrieve Data' now properly grays out.
- Target entry box in Real Time Blacklist Check now properly grays out.
- Target entry box in Port Scanner now properly grays out.
- Target entry box in DNS Tools Core now properly grays out.
- Target entry box in Email Validate now properly grays out.
- Target entry box in Finger now properly grays out.
- IP start and end entry boxes and MRU clear buttons in Ping Sweep now properly gray out.
- Target entry box and host field in Text-Only Web Page Grabber now properly grays out.
- Target entry box in Whois now properly grays out.
- Packet Capture Tool now parses IGMP packets properly.
- Improved automatic scaling of results grid data column widths.
- Updated SQLite DLL to version 3.7.2.0.
- Updated to WinPcap 4.1.2
- Updated database files.

About NetScanTools LE: It has 12 important tools and it has the Packet Capture utility from NetScanTools Pro. As in NetScanTools Pro, Packet Capture runs outside the main toolset as a standalone application launched from within NetScanTools LE. It is used to capture packet traffic entering and leaving the computer while you use the various tools. Its purpose is to document the process used in the acquisition of network data – but you have to activate it separately. The packet capture files are saved in industry standard WinPcap format compatible with advanced packet analysis tools like Wireshark. A companion MD5 hash signature file is also saved along with the packet capture file.

NetScanTools LE pricing:

Law Enforcement: **\$69**

Everyone else: **\$129**



NetScanTools LE uses several tools from NetScanTools Pro with an emphasis on the tools Law Enforcement uses. Some features of NetScanTools LE will be migrated back into NetScanTools Pro version 11. For instance, the ability to use two or more manual tools simultaneously returns and a completely reworked and simplified Automated tool section. The user interface is also updated.

Remember, this is a subset of the tools in the Pro and it's not intended to be a replacement. There are 13 tools in LE vs at least 42 in Pro. Network management tools such as Advanced DNS Tools, SNMP and Packet Generator etc. are not found in NetScanTools LE. NetScanTools LE does not depend on WinPcap unless you need to use Packet Capture. Tools in common with Pro are simplified and use only the basic modes needed to find the data you are looking for. The advanced modes found in many tools like NetScanTools Pro TCP Traceroute are not available.

Main NetScanTools LE Description Page:

<http://www.netscantools-le.com/>

Try It!

http://www.netscantools.com/nst_le_trial.html

Tool by Tool Comparison between NetScanTools LE and NetScanTools Pro

http://www.netscantools.com/nst_le_pro_feature_comparison.html

NetScanTools® Pro Version 11 Development Status and NEW Screenshots

NetScanTools Pro version 11 is being worked on daily. Right now the SNMP tools are about 80% finished – this was the biggest tool and possibly the most complicated tool to transfer to the new interface. The current SNMP tool was split into two separate tools. One has the basic SNMP Get, Set, Walk, GetNext, GetBulk, and WalkBulk tools, while the other has the specialized tools for showing the current mib structure and other things. Several things are new in the SNMP tool: we are now supporting the v2/v3 GETBULK command using GetBulk and WalkBulk. We also added GetNext which returns the first subOID of the given OID.

The most important change is in SNMPv3 support. Since SNMPv3 uses encryption, we will not be able to distribute the encryption DLL (which is from OpenSSL) in our installer that is generally available to any purchaser. NetScanTools Pro will have two SNMP DLLs, one that can use the encryption DLL and one that does not – the one that does not use it will be the default. There will be a separate program for swapping those DLLs while NetScanTools Pro is not running. Since the encryption DLL is widely available you can download it from a number of sources including open source distributions like OpenOffice, PHP and PadGen. More on this later - do you have comments?

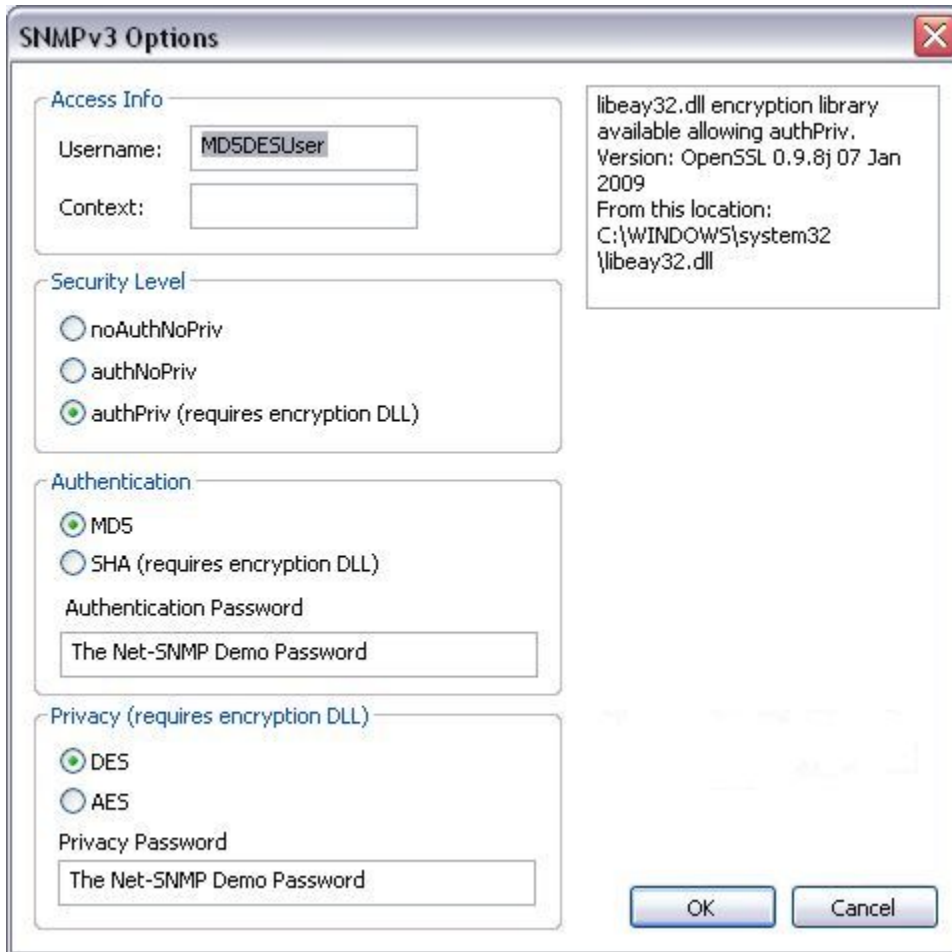
- **If your v10 maintenance plan is 'current' or 'active' at the time of release, you will be getting version 11 for free.**
- **If your maintenance plan has expired, there will be an upgrade fee.**
- **When will v11 be released?** During summertime it is hard to get things finished because of all the summer activities, so we are now targeting sometime in September--we will keep you posted on Facebook and Twitter. Sorry for the delay.

Here are a few of the changes already made:

- **There is a FAVORITES left panel control bar (see screenshot below).** You can add the tools you most frequently use to that list.
- **The user interface will be updated to be very similar to NetScanTools LE.** The advantage this brings is the ability to use more than one tool at once.
- **Results will be optionally saved to a database as they are in NetScanTools LE.** This database is required if you want to use the Automated Tools.

NetScanTools Pro v11 Screenshots

SNMPv3 Options



The image shows a Windows-style dialog box titled "SNMPv3 Options". It is divided into several sections for configuring SNMPv3 settings. On the right side, there is a text box containing information about the libeay32.dll encryption library.

Access Info

Username:

Context:

Security Level

noAuthNoPriv

authNoPriv

authPriv (requires encryption DLL)

Authentication

MD5

SHA (requires encryption DLL)

Authentication Password

Privacy (requires encryption DLL)

DES

AES

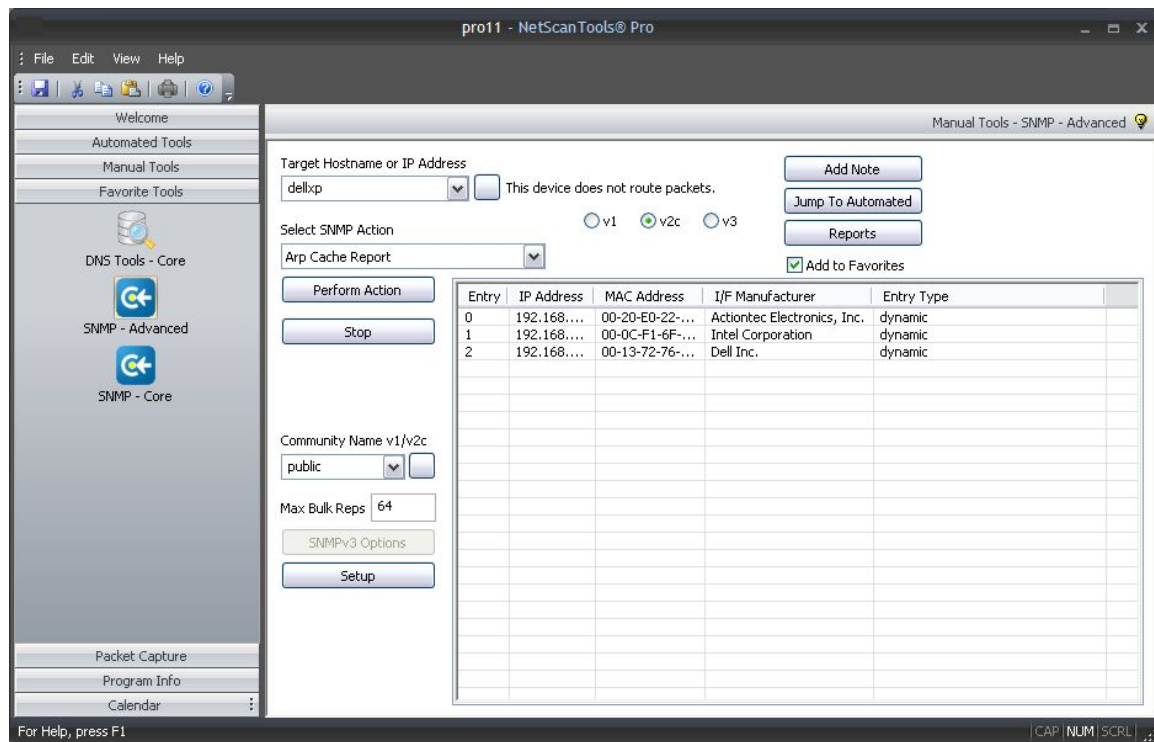
Privacy Password

libeay32.dll encryption library available allowing authPriv.
Version: OpenSSL 0.9.8j 07 Jan 2009
From this location:
C:\WINDOWS\system32\libeay32.dll

OK Cancel

More screenshots on the next page.

SNMP Arp Cache Report



NetScanTools® Pro 10.98?

Yes, it will happen very soon. Why? See the next article.

Two workarounds for NetScanTools® Pro 10.97 and earlier

Ping Tool. Please do not try to enter a number greater than 256 into the Setup/Number of Packets Sent field when you are using anything but the MS ICMP ping mode. This will be fixed in 10.98. Thanks to Brian V.

DNS Tool – Core. If you are doing an NSLOOKUP or DIG on an IP address looking for PTR records, if the return data from DNS is more than approximately 200 hostnames, you may see a set of error messages. Also, in Get Basic DNS Records, if the TXT record is more than 512 bytes, you may also see an error. Both of these will be fixed in 10.98. Thanks to Michael L for the first one. I found the second one myself and wrote about it last month.

NetScanTools® Pro Version 10.97 Released June 28, 2010

NetScanTools Pro version 10.97 was released on June 28. During the process of converting 10.9x to v11 we found several minor problems, so those have been fixed in this release. **To upgrade**, click on Help/Check for New Version (requires an active maintenance plan). Here are some highlights.

Changes to Existing Tools

- Network Statistics: the functions that disconnect an established TCP connection have now been fixed, ie. double-clicking a connection or using the Disconnect All TCP button.
- -TCP Term: connection negotiations simplified so that it now works better when connecting to a telnet port.
- -ARP Ping: removed unused variables.
- -Email Validate: added timestamp for query. Minor changes to make verbose/short work better.
- -NetBIOS Info - Shares/System Basics: changed the method of obtaining hidden shares so that more hidden shares will be reported. Account privileges affect what you can see with this tool, so we added a method for logging onto remote machines with user accounts.
- -Documentation updated to reflect these changes.
- -Updated database files.

NetScanTools® Pro 2 Year Term Maintenance Plans

By popular demand, we are now offering two (2) year term maintenance plans for \$135 if your plan has yet not expired and you are within the 30 day grace period. You can purchase online or by contacting our office (see end of this newsletter).

<https://www.plimus.com/jsp/buynow.jsp?contractId=2836110>

REMINDERS

NetScanTools® Pro Versions Compatible with Windows 7 and Windows Vista

People have asked us which versions of NetScanTools Pro 10.x can be used on Windows 7 and Windows Vista. These are the minimum NetScanTools Pro versions that you should be using on each operating system.

- **Windows 7 - 64 Bit:** We highly recommend using NetScanTools Pro version 10.94 or newer because it incorporates WinPcap 4.1.1 which is designed for Windows 7 - 64.
- **Windows 7 - 32 Bit:** NetScanTools Pro version 10.81 or newer. For best results, always use the latest version.
- **Windows Vista/2008:** You must have NetScanTools Pro version 10.42 or newer. All known Vista issues were completely fixed by version 10.52.
- **Windows XP/2003/2000:** Any NetScanTools Pro version 10.

- **We no longer recommend using the first three versions on any operating system: 10.0, 10.1, or 10.20.**

What happens if you use an earlier version of NetScanTools Pro on Windows Vista? The difference between Windows Vista and Windows XP was much greater than between Vista and 7. You may experience crashing particularly in the Network Statistics Tool. You may experience missing results in certain modes of traceroute. These are some examples – there are others. If you use Windows 7 or Vista, please use a version equal to or newer than what we are showing above.

NetScanTools® Pro on Windows 7 – 64 Bit

NetScanTools Pro version 10 is a 32 bit program that runs fine in the 32 bit subsystem found in Windows 7 - 64. It will show up in task manager as "nstpro.exe *32". If you are using the USB version, we highly recommend using version 10.94 or newer if you are plugging it into Windows 7 - 64 bit. And yes, we plan on making a 64 bit native version at some point.

ipPulse 1.70 Released May 20, 2010

ipPulse? You probably have never heard of ipPulse.

What is ipPulse? it is a program designed to cycle through a list of network connected devices and test them one at a time. It can have one or two tests per machine. The first test called the primary test can be either a Ping to see if it responds or a TCP connect to a port of your choice to see if a service is alive on the target. The second optional test can be either a TCP port test (different port) or an SNMP v1/v2c walk of the active interfaces. Failures can be logged and someone can be notified that a failure occurred. Notification can be audible or by email to a computer to a cell phone. That's it. A pretty simple, but effective program. There are programs out there that cost over 10 times as much that do pretty much the same thing with more bells and whistles.

So what did we change from the last version of five years ago? For starters it was compiled by the newer Visual Studio 2008 (next time maybe VS2010). Two things were removed: 1. ping using 'raw sockets'. This was redundant because it had another Ping setting. 2. Support for pagers. I haven't seen anyone with a pager in a long time. Cell phones can be emailed from the program (ie. phoneNumber@vtext.com), so unless anyone has a real heart attack over it, pager support is gone. The next thing was Windows 7 (and Vista) support. Previous versions of Windows 'looked the other way' when we wrote our log files and list of targets in the program installation directory. Windows 7 and Vista don't like that at all. So now those writable files go in the user data directory where they belong. The final change was converting from the ancient Wise installer to the latest version of Inno Setup. So now it should run fine on Windows 7, Vista, XP, 2008, 2003 and 2000. Older Windows are not supported – sorry.

If you are interested, you can find it at <http://www.nwpsw.com/ippulsemain.html>

ipPulse costs \$69 for an unlock code. We used to compile a separate CDROM version, but like 45's, CDROMs are vanishing, so now it's just an unlock code. If you have an older version from CDROM and you want to upgrade, contact us for the unlock code.

Give us your name, email and CDKEY or invoice number and we'll give you the unlock code for 1.70.

How to upgrade NetScanTools® Pro

Here is how to upgrade NetScanTools Pro. As you read through this, please refer to image below – check it out

How to upgrade:

Prerequisites:

- You must have the NetScanTools Pro v10.x installed.
- You must have a **valid active maintenance plan**.
- The software must be registered AND you must have applied the “NST Pro 10 Registration Code” email message we sent back to you – if it is not registered, our secure site will not have any login credentials ready for you.

1. Start NetScanTools Pro and click on the Online group in the left panel.
2. Then click on the Check for New Version icon. Once the web page appears in the right pane, you will see the Login link text. (**Alternative:** all versions after 10.54 have a Check for New Version link to the Help menu)
3. After clicking on the Login text, you will see a popup window asking for a username and password. Those are found in the Login Access Credentials area as shown in the image on the next page. **The username and password ARE CASE SENSITIVE.** We recommend using copy and paste.

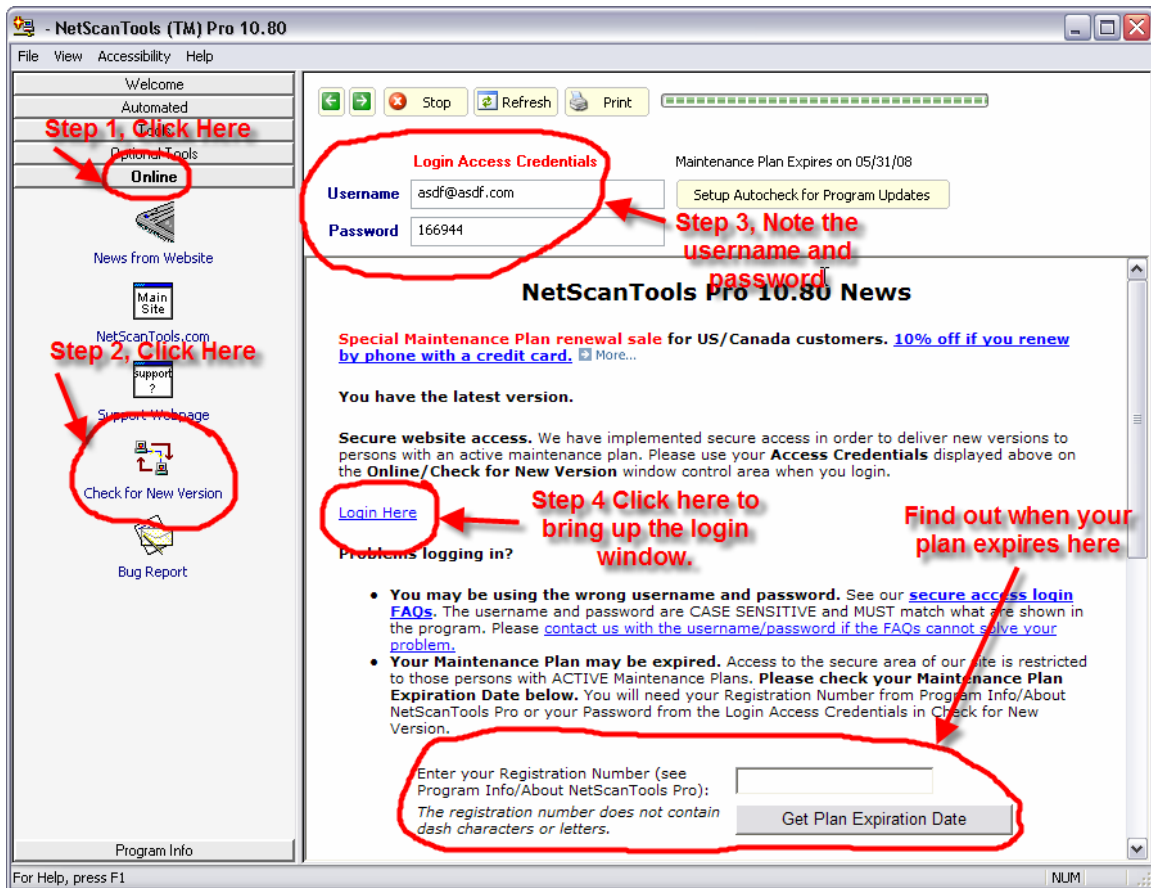
If your access credentials do not work please check for typos in your username or password (we recommend copy and paste). Your username is your email address that you gave when you registered and the password is the registration number.

It is also possible that your maintenance plan expired. Use the new online method to check your maintenance plan expiration date. Please contact us with the username and password you are using and we can check your access credentials. **You must have a valid maintenance plan to download an upgrade.**

Once you have logged in to the secure server, the **full download** is ready for installation by those of you with installed versions. You will need your CDKEY/serial number to run the installer – see the About NetScanTools Pro window to get it. Please install over the top of your current installation.

USB Version users can download an upgrade patch from the secure server. The latest version of the Managed Switch Port Mapping Tool is also available for download from this window and it is publically available elsewhere on our main site.

The image below shows where in the program you need to go to login to our secure site.



USB Version Users – Make a Backup of Your Software!

Please make a full backup of your USB Version after you have registered it and applied the NST Pro 10 Registration Code message we sent back by email. If you have a backup of the contents of the drive, we can easily assist you in restoring it to another drive in case you lose the original drive. Remember that the Lexar Lightning drive we supply the USB version on is one of the fastest drives currently available. If you do have to restore it, we highly recommend that same drive series or a faster model. Other types of larger USB drives that cost less are often much slower.

Backup your drive by copying all files and directories to another drive either on your computer or a portable backup drive. Saving the files to CDR is even better. Please do it today!

About the Maintenance Plan - NetScanTools® Pro

You need to have an active maintenance plan to obtain the latest release. A FULL Install of the "installed version 10.9X" (not a patch) is available on our secure site for download. Those who have the USB version are supplied with a patch for download from the secure site. You must have an active maintenance plan in order to login to the

secure site. See the section **How to Upgrade NetScanTools Pro** below for help downloading the current release.

One year of maintenance (beginning at date of purchase) is included with a new or upgrade license. Benefits of the plan include telephone technical support and access to downloadable updates. We released seven updates in 2009. We released six updates in 2008. In 2007 we released 6 updates mostly targeted towards Windows Vista compatibility.

If you let your maintenance plan expire, the cost to renew the plan increases the longer you wait to renew. We give a 30 day grace period after your expiration date during which the renewal cost is \$75 per license. If you are unsure when your plan expires, please feel free to contact us by email or phone or using the new method outlined earlier in this newsletter before renewing (see end of newsletter for contact information). You can always continue using the program even after the maintenance plan expires, but you will not get any changes or updated databases. And you will not get version 11 for free if your version 10 maintenance plan has expired.

Contact Information

If you have any questions or suggestions, please feel free to email.

Northwest Performance Software, Inc.
PO Box 1375
Sequim WA 98382-1375
(360) 683-9888
www.netscantools.com
sales [at] netscantools [dot] com

'NetScanTools Pro', 'NetScanTools Standard', 'NetScanTools Basic', 'NetScanTools LE', 'ipPulse', 'Northwest Performance Software' and 'NetScanTools.com', are trademarks of Northwest Performance Software, Inc. 'NetScanTools' is a registered trademark of Northwest Performance Software, Inc.