

NetScanTools® Pro



Monthly Newsletter

www.netscantools.com

February 2019

 <https://twitter.com/netscantools>

 <https://www.facebook.com/NetScanTools>

 <https://www.youtube.com/user/netscantools>

 <https://netscantools.blogspot.com/>

In this newsletter:

News

- **NetScanTools Pro 11.86.2 Released Feb 15, 2019**
- **Online Ordering Changes**
- **NetScanTools Basic 2.53 Released Jan 18, 2019**
- **Plans for the next releases of NetScanTools Pro and the Managed Switch Port Mapping Tool**
- **NetScanTools Pro Tip: Packet Jitter**

News...

From the Editor...

It is now late February. We had a massive (by our standards) snowstorm a couple of weeks ago where we got 18 inches overnight. Then we had 6 more inches of snow over the next couple of days. It was not fun but hopefully Spring is coming soon. Look for new releases in March.

-Kirk

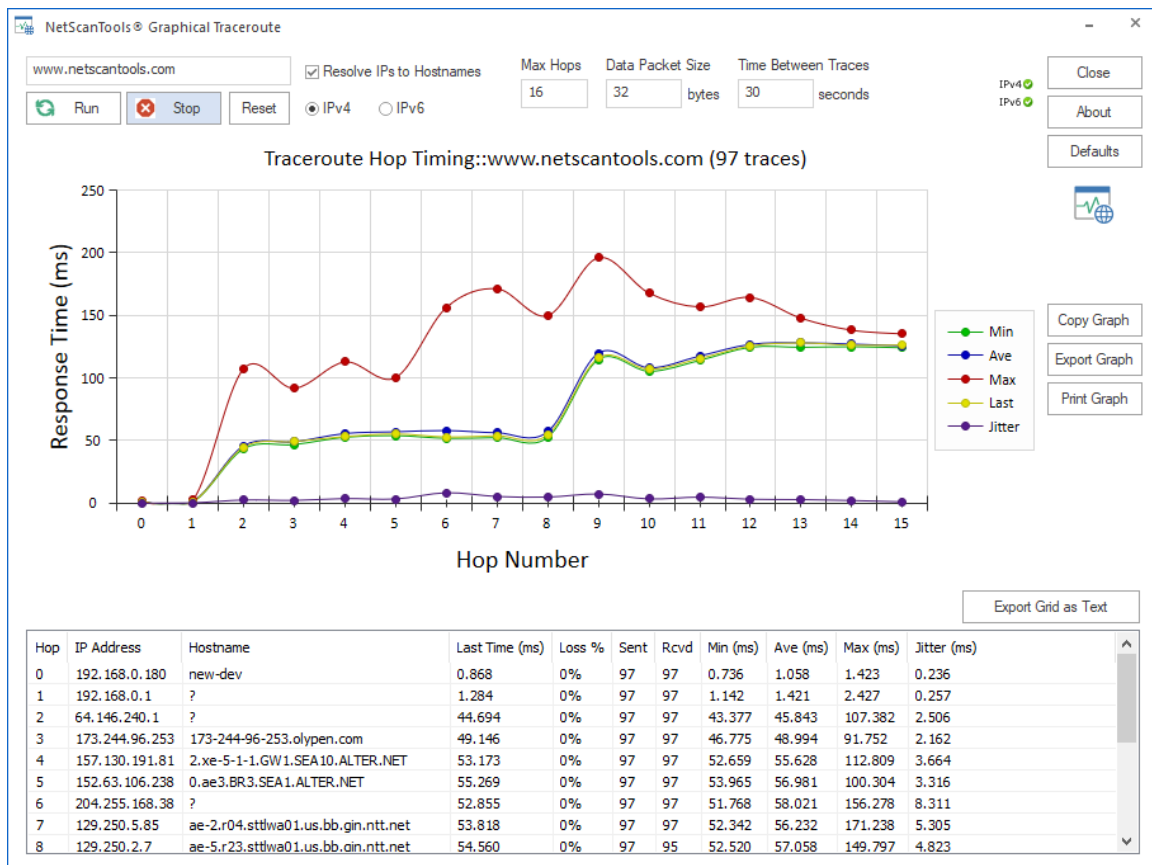
NetScanTools Pro 11.86.2 Released Feb 15, 2019

This release has a few minor additions and several fixes. There was debate as to whether this should be 11.87 or 11.86.2 but we settled on the latter because the visible changes were minor. 11.87 will introduce a new continuous ping tool with logging and graphing of min/max/average and jitter – it was not complete in time.

Noticeable changes:

'WinPcap Interface' changed to 'Network Interface'. Dates changed to 2019. The word 'Program' changed to 'Application' or 'Software' as applicable.

Graphical Traceroute now has a jitter calculation on a per hop basis. What this means is jitter is calculated for each hop and shown on the graph and in the data grid. You can see the jitter as the purple line and the new data grid column in the image below.



DNS Tools – Batch Queries (a bulk DNS lookup tool) now has an improved target list generator. See the new Create List button results below.

Bulk lookups for IPv4 addresses and hostnames. Validate DNS forward and reverse lookups.

Use Default System DNS for Lookups

Use Specific DNS: 8.8.8.8 X

Add Note

Jump To Automated

Ready.

Lookup IP/hostname

Validate DNS

Stop

Create List

Import List

Clear List

Number	IPv
1	127

Speed

100%

Create/Maintain a list of IP Addresses or Hostnames using this Editor.

Ignore duplicates via Import and Add to List

IP Address or Hostname

Add to List >>

Import from File

Import hostnames or IP addresses from a text file. One per line.

Export to File

Export the List to a text file.

Export >>

IP Address Range Generator

Starting IP Address

192 . 168 . 0 . 1 P

Ending IP Address

192 . 168 . 0 . 254 P

Generate IP Range

Edit Entry

Up

Down

Delete

Edit Selected Entry

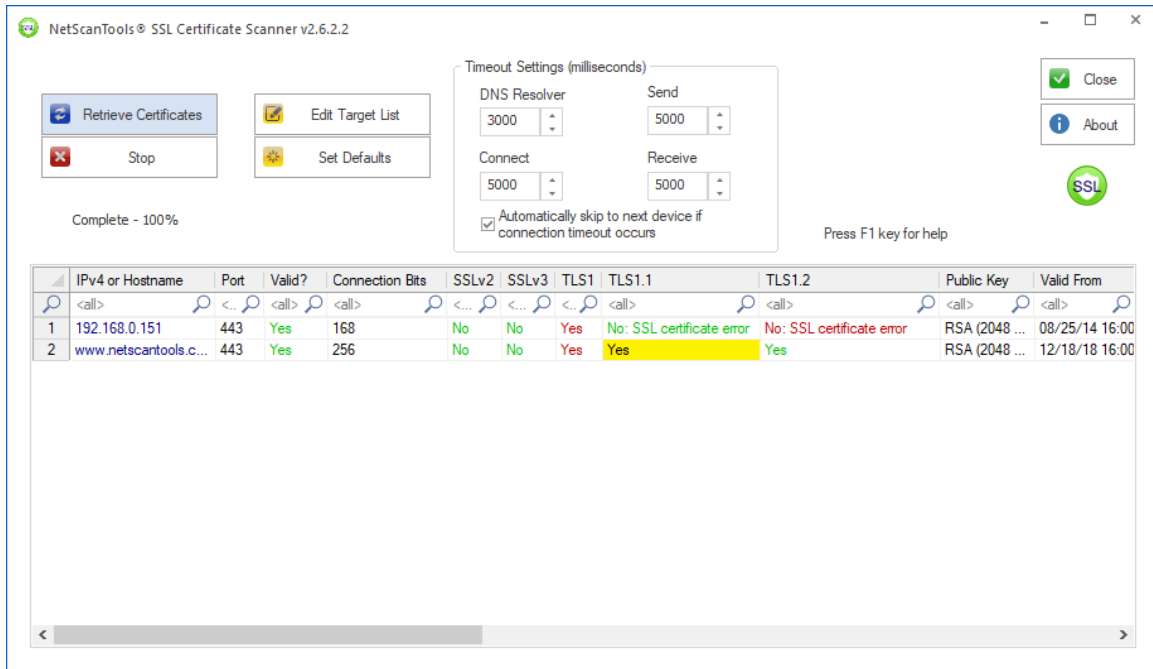
Clear List

Target List

- 192.168.0.1
- 192.168.0.2
- 192.168.0.3
- 192.168.0.4
- 192.168.0.5
- 192.168.0.6
- 192.168.0.7
- 192.168.0.8
- 192.168.0.9
- 192.168.0.10
- 192.168.0.11
- 192.168.0.12
- 192.168.0.13
- 192.168.0.14
- 192.168.0.15
- 192.168.0.16
- 192.168.0.17
- 192.168.0.18
- 192.168.0.19
- 192.168.0.20
- 192.168.0.21
- 192.168.0.22

DHCP Server Discovery - a complaint we were getting about the tool was that sometimes the local client port 68 was being used, therefore you could not use the tool. This was fixed.

SSL Certificate Scanner – there are now expanded error messages when 'No' is shown in the TLS columns. In the example below, 'No: SSL Certificate error' means 'One or more errors were found in the Secure Sockets Layer (SSL) certificate sent by the server.' In this case it means that when it tried to speak TLS1.1 and 1.2 to the server, the server rejected the request – it's a Windows 2003 server that does not speak anything newer than TLS1.



Here are the changes in v11.86.2:

- New 'Jitter' column and graph line added to the Graphical Traceroute tool.
- DNS Tool - Batch Queries has new method for creating a list of targets, specifically IPv4 range generator.
- Changes to DHCP Server Discovery should eliminate the error message about DHCP client port 68 being in use.
- SSL Certificate Scanner has expanded error notes for TLS1, TLS1.1 and TLS1.2. TLS1.3 will not be supported until Microsoft SCHANNEL supports it.
- Fixed minor problems with results chart used in Ping, Traceroute, ARP Ping and Ping Scanner. Now limited to 8192 data points.
- Fixed a packet formatting problem with DNS queries where some DNS servers did not respond to UDP queries but would respond to TCP queries.
- Minor internal changes to Graphical Ping.
- Forced UDP DNS lookup in Whois.

- Internal improvements to Ping and Traceroute in algorithm displaying the message showing detection of blocking firewall.
- Added tooltips that were missing to SMB Scanner launch button.
- Export from Target List Editor in Network Routing Visualizer and Port Scanner now automatically appends .txt if no file extension is added.
- Changed left panel title from 'Program Info' to 'Application Info'.
- Text notation of 'Program' have been changed to 'Application' or 'Software'.
- 'WinPcap Interface' notation has been changed to 'Network Interface'.
- Changed dates to 2019.
- Updated SQLite to version 3.27.1
- Updated MAC address/Manufacturer database.
- Updated IP to Country database.

Click on Help menu/Check for Update to get the latest version – however, you must have an active maintenance plan to get this new version. USB version users will be downloading a patch – follow the directions carefully. Installed version users will be installing over the top of their current installed version.

Online Ordering Changes

When you order a NetScanTools Pro Maintenance Plan renewal online through our resale partner FastSpring, you will be presented with a link to download NetScanTools Pro installed version or the USB Version patch.

Oh, and please do not be confused – when you press an orange Buy Now button you are going to our authorized resale partner FastSpring. We are not FastSpring. You will be purchasing from them and we fulfill your order.

NetScanTools Basic 2.53 Released Jan 18, 2019

This is a minor release – please visit netscantools-le.com or click on Help menu/Check for New Version. Changes:

- Internal changes to improve DNS queries.
- Changed text on some of the NetScanTools Pro information buttons.
- Updated SQLite to v3.26.0.0
- Changed date to 2019.

Plans for the next releases of NetScanTools Pro and the Managed Switch Port Mapping Tool

NetScanTools Pro. A new rapid repetition ping tool with logging is in work and will be complete for the next release. The purpose of it is to send ping packets rapidly (approx. 5ms repetition rate or slower), save the response for analysis after sending is complete. It will show graphically min, max, average and jitter over the time you have run the tool.



Managed Switch Port Mapping Tool. Create an additional method of export to XML of the Switch List results. In addition to exporting each switch to a separate sheet, create an export with all switches on one sheet and a new extra left hand column showing the switch IP.

We will be removing all references to 10SCAPE since they went out of business at the end of 2018.

NetScanTools® Pro Tip

Packet Jitter. We have added a cumulative jitter calculation to Ping – Enhanced and Traceroute – Graphical. For Ping it is shown in this image highlighted in yellow. See topic 'NetScanTools Pro 11.86.2 Released Feb 15, 2019' above for an example of Graphical Traceroute results showing jitter.

Target Hostname or IP Address: X Network Interface:

Resolve IP Addresses to Hostnames IPv4  IPv6 

For Help, press F1

WinPcap Xmit/Rcv

ICMPv4 Ping
 UDPv4 Ping
 TCPv4 Ping

UDPv4 Socket Xmit WinPcap Rcv
 MS ICMPv4 Ping
 MS ICMPv6 Ping

Teredo Server (IPv6):
teredo.remlab.net

Ping	Responding IPv4	Bytes	Time (ms)	TTL	Status
1	23.52.169.36	32	52.912	57	0:0:Echo Reply
2	23.52.169.36	32	52.933	57	0:0:Echo Reply
3	23.52.169.36	32	52.260	57	0:0:Echo Reply

Pinged dailymail.co.uk [23.52.169.36] with 32 data bytes
Start Time: Tue, 26 Feb 2019 12:42:19
ANALYSIS: Target reached by one or more packets.
Outgoing Packet DS Bits: 000 000 ECN: 10
3 packets transmitted, 3 packets received, 0% packet loss

Round Trip Time - min / avg / max / ave jitter = 52.260 / 52.702 / 52.933 / 0.347 (ms)

Contact Information

If you have any questions or suggestions, please feel free to email.

Northwest Performance Software, Inc.
PO Box 1375
Sequim WA 98382
(360) 683-9888
www.netscantools.com
sales [at] netscantools [dot] com

'NetScanTools Pro', 'NetScanTools Standard', 'NetScanTools Basic', 'NetScanTools LE', 'ipPulse', 'Northwest Performance Software' and 'NetScanTools.com', are trademarks of Northwest Performance Software, Inc. 'NetScanTools' is a registered trademark of Northwest Performance Software, Inc.

Other names and trademarks are the property of their respective owners.