



Newsletter - February 2026

In This Issue

- Switch Port Mapper update (v2.89) with improved ARP retrieval and expanded switch support
- NetScanTools Pro update (v11.95.3) with new MAC manufacturer import capabilities and refreshed databases
- A sneak peek at NetScanTools Version 12, including a look at the redesigned interface and tool layout

Switch Port Mapper Update 2.89 Released 1/28/26

Switch Port Mapper 2.89 focuses on improving accuracy, device compatibility, and reporting polish—especially for ARP-driven workflows.

What's New

- **Improved ARP table retrieval**
 - This change made IP addresses appear as expected in **HPE Aruba 8360 and 6200F** switches.
- In **Device Settings**, the test for ARP table population has been improved.
- **Web browser report colors updated** to match the **NetScanTools Pro** new color scheme.



- Added methods for retrieving **extended device information from ZyXEL switches**.
- Fixed incorrect completion message when erasing a viewed table in **Database Maintenance**.
- Updated **SQLite to version 3.51.2**
- Updated **MAC address/Manufacturer database**
- **Copyright dates updated to 2026**

Why It Matters

- Better ARP retrieval = **more reliable mapping results**, especially on newer Aruba platforms where ARP visibility is critical.
- Expanded ZyXEL support improves multi-vendor environments where richer device metadata makes inventory and troubleshooting easier.
- Report styling improvements bring more consistency across products and make reports easier to present internally.

NetScanTools Pro Update Released Version 11.95.3

This Pro release adds a highly-requested MAC manufacturer workflow improvement, along with tool and database refreshes.

What's New

- Added a method to **import MAC address/manufacturer** pairs into the MAC Address to Manufacturer tool
 - Note: This is a temporary import. The next release will overwrite the database and remove custom entries.
- Updated the SMTP Server Tests Tool with the latest software (minor fixes included)



- Updated SQLite to version 3.51.0
- Updated MAC address/Manufacturer database
- Updated IP to Country database

Why It Matters

- The MAC manufacturer import makes it easier to support **internal/vendor-specific MAC ranges**, lab devices, or unusual hardware where public databases fall short.
- Database refreshes improve **device identification accuracy** and **geo attribution**, especially useful in reporting and investigations.

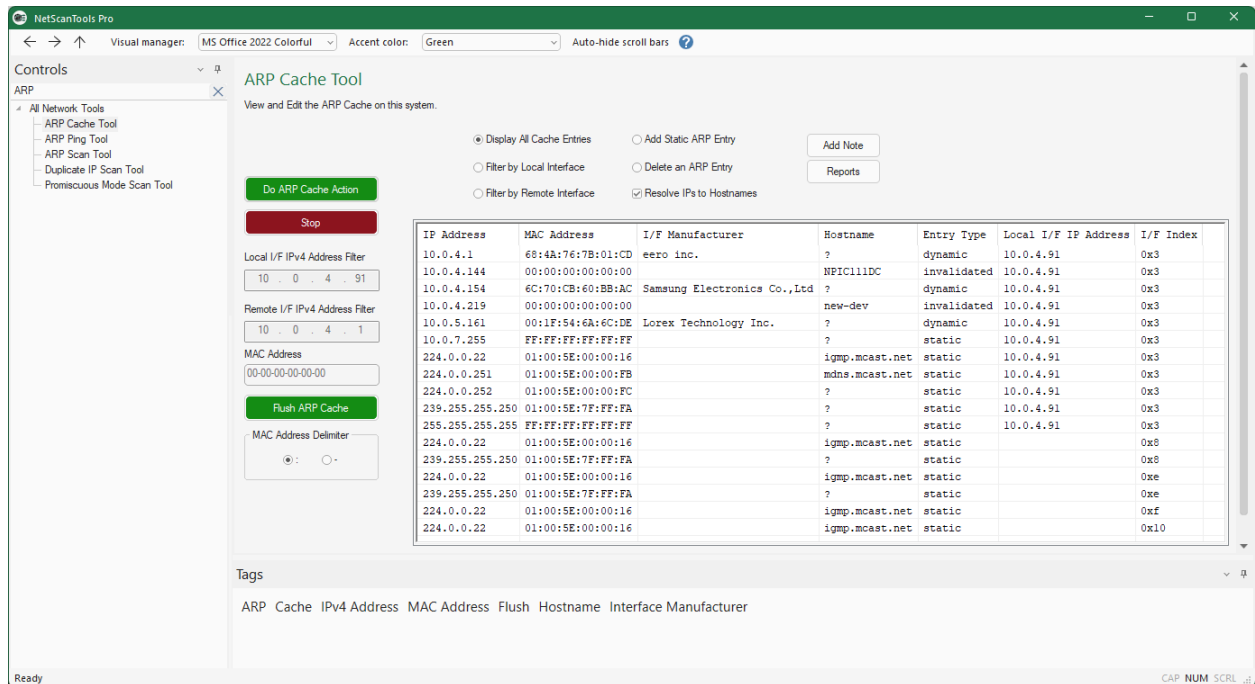
How To Access New Updates

From within the software navigate to the Application Info tab of the left hand tool bar, and select Check for New Versions

Sneak Peek NetScanTools Version 12 (Coming Soon)

Here's an early look at one of the tools in the upcoming NetScanTools Version 12.





Key Features

- Cleaner navigation + tool organization
- Faster discovery and switching between tools, especially for users who jump between related utilities.
- More structured tool layout
- Better filtering + workflow controls
- Improved reporting/annotation workflow

In Short

NetScanTools 12 is set to deliver a cleaner layout, better tool grouping, modern styling, and more direct access to common actions while keeping the data-heavy, technician-friendly layout our users expect.



- Retrieve past scans quickly.
 - Include test data in documentation or audit reports.
 - Maintain consistent historical records.
-

Thank you all for reading and for your loyal support, it's our pleasure to serve you!

– NetScanTools®

