

NetScanTools® Pro



Monthly Newsletter

www.netscantools.com

March 2019

 <https://twitter.com/netscantools>

 <https://www.facebook.com/NetScanTools>

 <https://www.youtube.com/user/netscantools>

 <https://netscantools.blogspot.com/>

In this newsletter:

News

- **Plans for the next releases of NetScanTools Pro and the Managed Switch Port Mapping Tool (updated)**
- **NetScanTools Pro Tip: Use Npcap instead of WinPcap**
- **NetScanTools Pro 11.86.2 Released Feb 15, 2019**

News...

From the Editor...

I hope your spring is going well. I'm working on both NetScanTools Pro and the Managed Switch Port Mapping Tool at the same time and should have new releases available in April.

-Kirk

Plans for the next releases of NetScanTools Pro and the Managed Switch Port Mapping Tool

NetScanTools Pro. A new rapid repetition ping tool with logging is still in work and will be complete for the next release. The purpose of it is to send ping packets rapidly (approx. 5ms repetition rate or slower) and save the response for analysis after sending is complete. It will show graphically min, max, average and jitter over the time you have run the tool. It is currently working quite well. It has been tested with 32 million pings so far. The graphing portion is not complete.

Managed Switch Port Mapping Tool. The right-click export to XML now aligns each cell to the top so that it looks correct when imported into a spreadsheet and matches the grid in the software. There will be an additional method of export to XML of the Switch List results. In addition to exporting each switch to a separate sheet, create an export with all switches on one sheet and a new extra left hand column showing the switch IP.

We will be removing all references to the 10SCAPE mapping software since they went out of business at the end of 2018.

This release should be done in early April.

NetScanTools® Pro Tip: Use Npcap instead of WinPcap

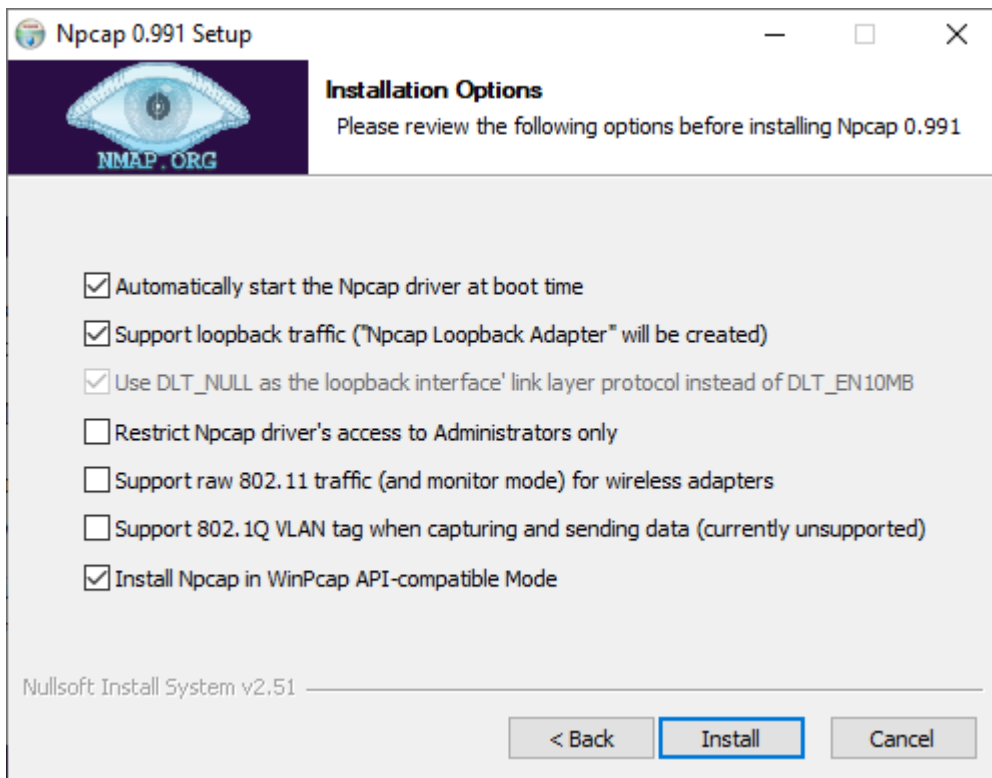
What happened to WinPcap: well, actually, nothing. WinPcap has not had any active development for years. It is still useful for XP and Vista (if anyone still runs those OS's) and it still works even on Windows 10 1809. WinPcap is based on the NDIS 5 driver specification and that was almost deprecated out of existence in Windows 10 betas. NDIS 5 remains in Windows 10 for now.

For more on the NDIS versions, look at this:

<https://docs.microsoft.com/en-us/windows-hardware/drivers/network/overview-of-ndis-versions>

Npcap is a fork using NDIS 6 based on the WinPcap source code. It is under active development by the NMAP people and the best part is they fix things! However, unlike WinPcap we cannot distribute Npcap with our software. You must download it from nmap.org/npcap and install it yourself.

Installing Npcap – IMPORTANT: Please select the option “Install Npcap in WinPcap API-compatible Mode” (see image on next page). This assures that you can use it with NetScanTools Pro and NetScanTools LE. The installer will uninstall WinPcap if it is present.



We will soon be changing the NetScanTools installers to give you the option of installing WinPcap or directing you to the Npcap download site.

You must have one or the other installed for NetScanTools Pro to fully operate.

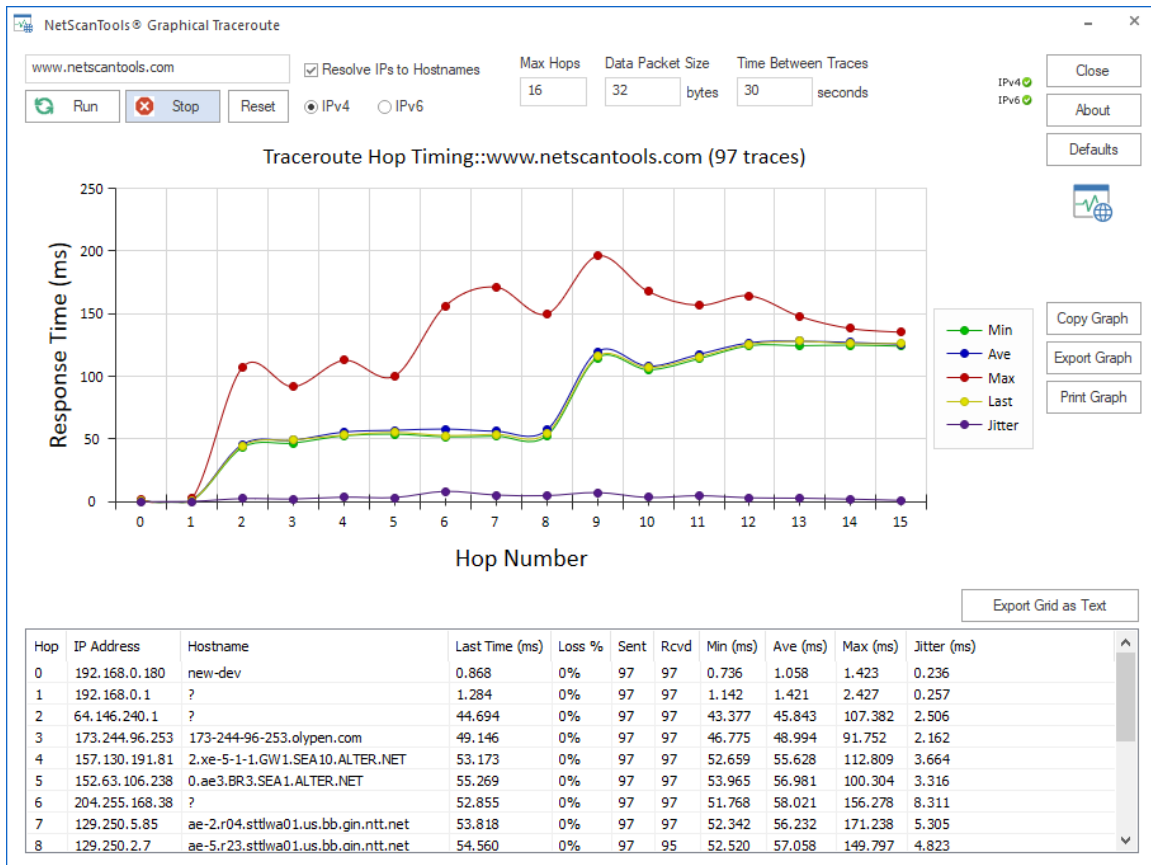
NetScanTools Pro 11.86.2 Released Feb 15, 2019

This release has a few minor additions and several fixes. There was debate as to whether this should be 11.87 or 11.86.2 but we settled on the latter because the visible changes were minor. 11.87 will introduce a new continuous ping tool with logging and graphing of min/max/average and jitter – it was not complete in time.

Noticeable changes:

'WinPcap Interface' changed to 'Network Interface'. Dates changed to 2019. The word 'Program' changed to 'Application' or 'Software' as applicable.

Graphical Traceroute now has a jitter calculation on a per hop basis. What this means is jitter is calculated for each hop and shown on the graph and in the data grid. You can see the jitter as the purple line and the new data grid column in the image below.



DNS Tools – Batch Queries (a bulk DNS lookup tool) now has an improved target list generator. See the new Create List button results below.

Bulk lookups for IPv4 addresses and hostnames.
Validate DNS forward and reverse lookups.

Use Default System DNS for Lookups

Use Specific DNS: 8.8.8.8 X

Add Note

Jump To Automated

Ready.

Lookup IP/hostname
Validate DNS
Stop
Create List
Import List
Clear List

Number	IPv
1	127

Speed

Speed slider

Edit Target List

Create/Maintain a list of IP Addresses or Hostnames using this Editor.

Ignore duplicates via Import and Add to List

IP Address or Hostname

Import from File: Import hostnames or IP addresses from a text file. One per line. Import >>

Export to File: Export the List to a text file. Export >>

IP Address Range Generator

Starting IP Address: 192 . 168 . 0 . 1 p

Ending IP Address: 192 . 168 . 0 . 254 p

Generate IP Range

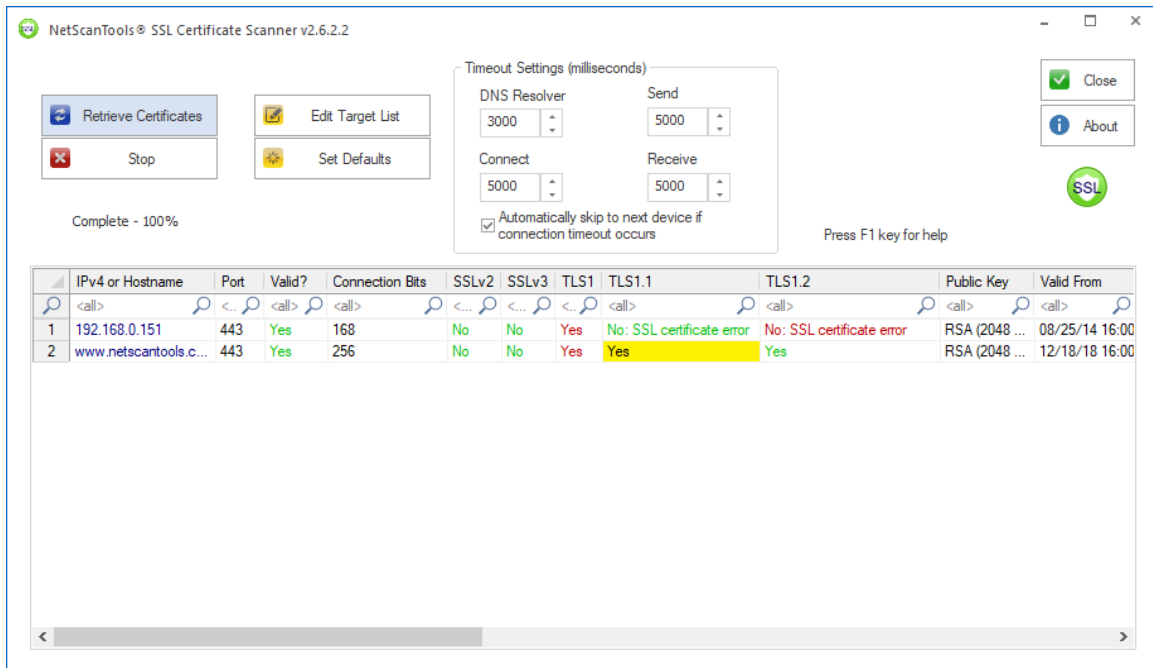
Target List

- 192.168.0.1
- 192.168.0.2
- 192.168.0.3
- 192.168.0.4
- 192.168.0.5
- 192.168.0.6
- 192.168.0.7
- 192.168.0.8
- 192.168.0.9
- 192.168.0.10
- 192.168.0.11
- 192.168.0.12
- 192.168.0.13
- 192.168.0.14
- 192.168.0.15
- 192.168.0.16
- 192.168.0.17
- 192.168.0.18
- 192.168.0.19
- 192.168.0.20
- 192.168.0.21
- 192.168.0.22

Buttons: Add to List >>, Edit Entry (Up, Down, Delete, Edit Selected Entry), Clear List, OK, Cancel

DHCP Server Discovery - a complaint we were getting about the tool was that sometimes the local client port 68 was being used, therefore you could not use the tool. This was fixed.

SSL Certificate Scanner - there are now expanded error messages when 'No' is shown in the TLS columns. In the example below, 'No: SSL Certificate error' means 'One or more errors were found in the Secure Sockets Layer (SSL) certificate sent by the server.' In this case it means that when it tried to speak TLS1.1 and 1.2 to the server, the server rejected the request - it's a Windows 2003 server that does not speak anything newer than TLS1.



Here are the changes in v11.86.2:

- New 'Jitter' column and graph line added to the Graphical Traceroute tool.
- DNS Tool - Batch Queries has new method for creating a list of targets, specifically IPv4 range generator.
- Changes to DHCP Server Discovery should eliminate the error message about DHCP client port 68 being in use.
- SSL Certificate Scanner has expanded error notes for TLS1, TLS1.1 and TLS1.2. TLS1.3 will not be supported until Microsoft SCHANNEL supports it.
- Fixed minor problems with results chart used in Ping, Traceroute, ARP Ping and Ping Scanner. Now limited to 8192 data points.
- Fixed a packet formatting problem with DNS queries where some DNS servers did not respond to UDP queries but would respond to TCP queries.
- Minor internal changes to Graphical Ping.
- Forced UDP DNS lookup in Whois.
- Internal improvements to Ping and Traceroute in algorithm displaying the message showing detection of blocking firewall.
- Added tooltips that were missing to SMB Scanner launch button.

- Export from Target List Editor in Network Routing Visualizer and Port Scanner now automatically appends .txt if no file extension is added.
- Changed left panel title from 'Program Info' to 'Application Info'.
- Text notation of 'Program' have been changed to 'Application' or 'Software'.
- 'WinPcap Interface' notation has been changed to 'Network Interface'.
- Changed dates to 2019.
- Updated SQLite to version 3.27.1
- Updated MAC address/Manufacturer database.
- Updated IP to Country database.

Click on Help menu/Check for Update to get the latest version – however, you must have an active maintenance plan to get this new version. USB version users will be downloading a patch – follow the directions carefully. Installed version users will be installing over the top of their current installed version.

Contact Information

If you have any questions or suggestions, please feel free to email.

Northwest Performance Software, Inc.
PO Box 1375
Sequim WA 98382
(360) 683-9888
www.netscantools.com
sales [at] netscantools [dot] com

'NetScanTools Pro', 'NetScanTools Standard', 'NetScanTools Basic', 'NetScanTools LE', 'ipPulse', 'Northwest Performance Software' and 'NetScanTools.com', are trademarks of Northwest Performance Software, Inc. 'NetScanTools' is a registered trademark of Northwest Performance Software, Inc.

Other names and trademarks are the property of their respective owners.